

**DESIGN
AWARDS**

Project Title: Congregation Rodeph Shalom

Client: Congregation Rodeph Shalom

Built ☒ **Unbuilt** ☐

Completion Date: 2016

Cost/Budget: Withheld **Sq.Ft:** Existing Building: 75,000SF
Renovation: 7,000SF
Addition: 18,000SF

Location: Philadelphia, PA

Type: Renovation and Addition

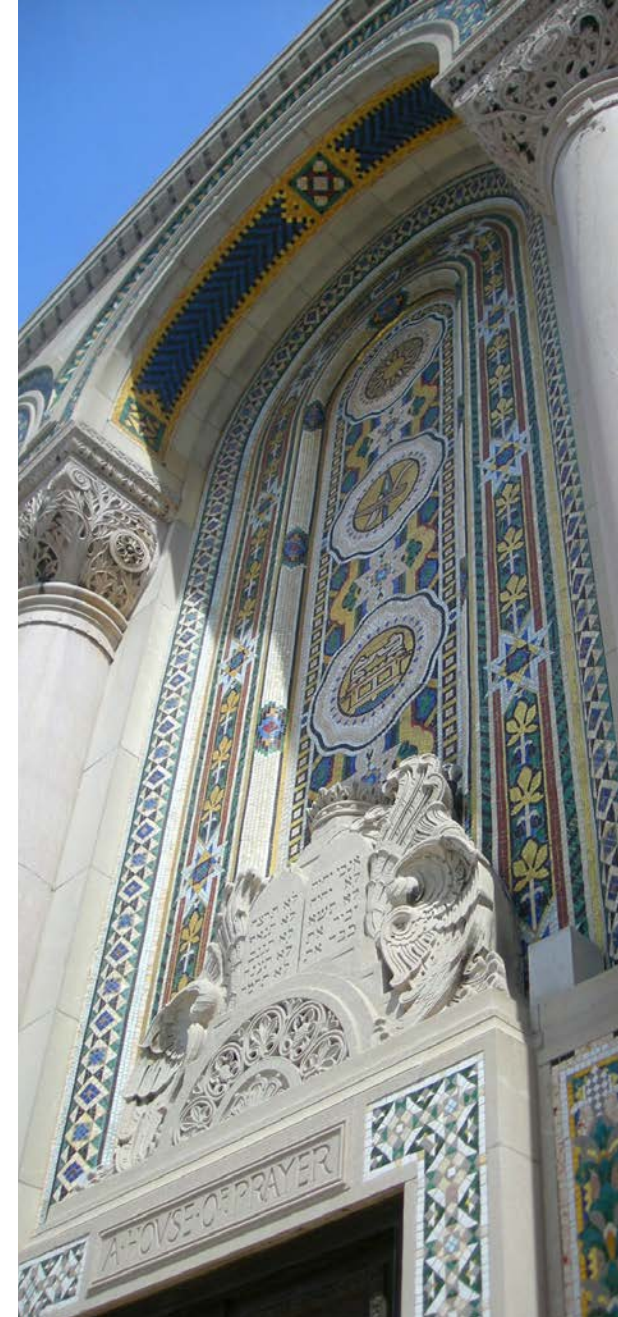


AIA
Philadelphia

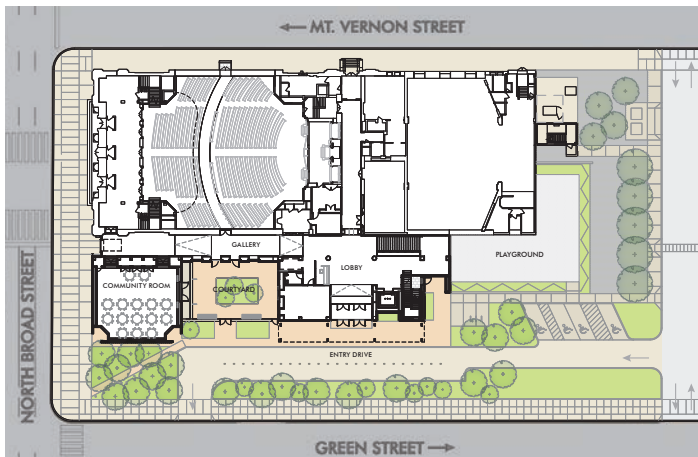


CONGREGATION RODEPH SHALOM

With a rapidly growing congregation, Rodeph Shalom needed additional meeting space, enhanced connectivity and accessibility throughout the building, and greater presence for the Philadelphia Museum of Jewish Art housed within its walls.



Founded in 1795, Rodef Shalom is the oldest Ashkenazic congregation in the Western Hemisphere. Its current synagogue building, listed on the National Register of Historic Places, was designed by Philadelphia architecture firm Simon & Simon and completed in 1928.

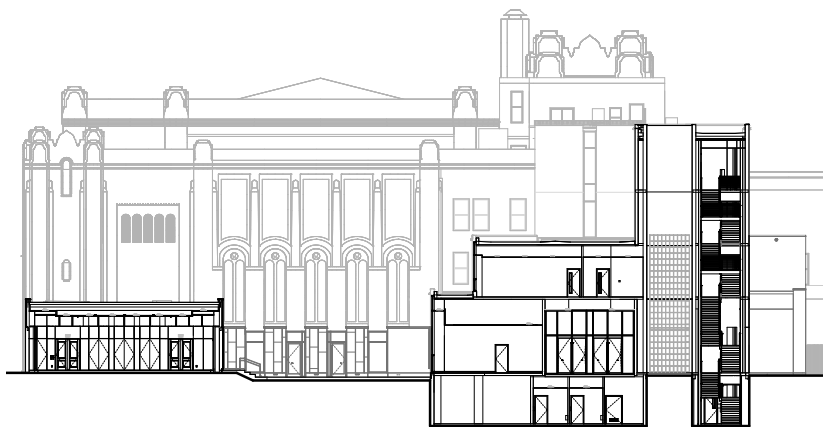


NEW PLAN

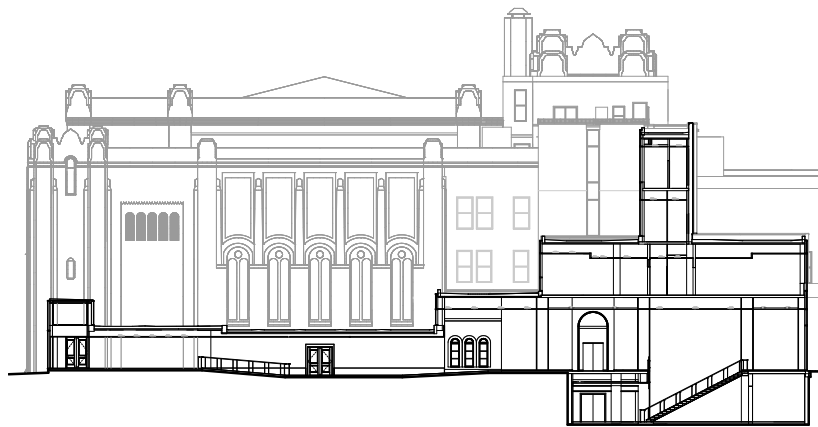


BEFORE

While the historic building is well-loved, the lack of interior connection between program spaces, coupled with a somewhat foreboding and largely opaque exterior, undermined the current vision for a welcoming and open place of prayer, study and social action.

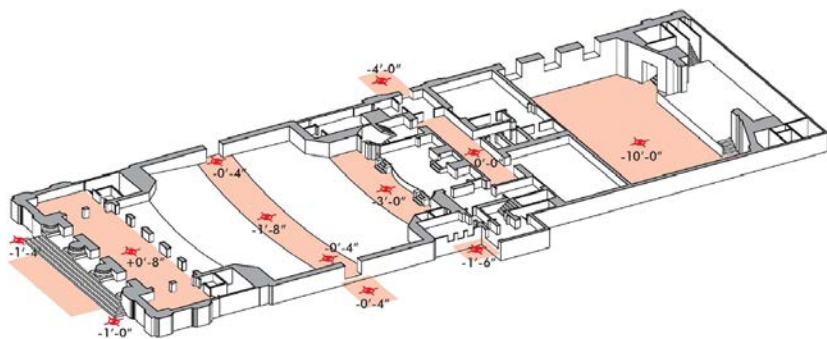


EAST-WEST SECTION THROUGH COMMUNITY ROOM AND VESTIBULE

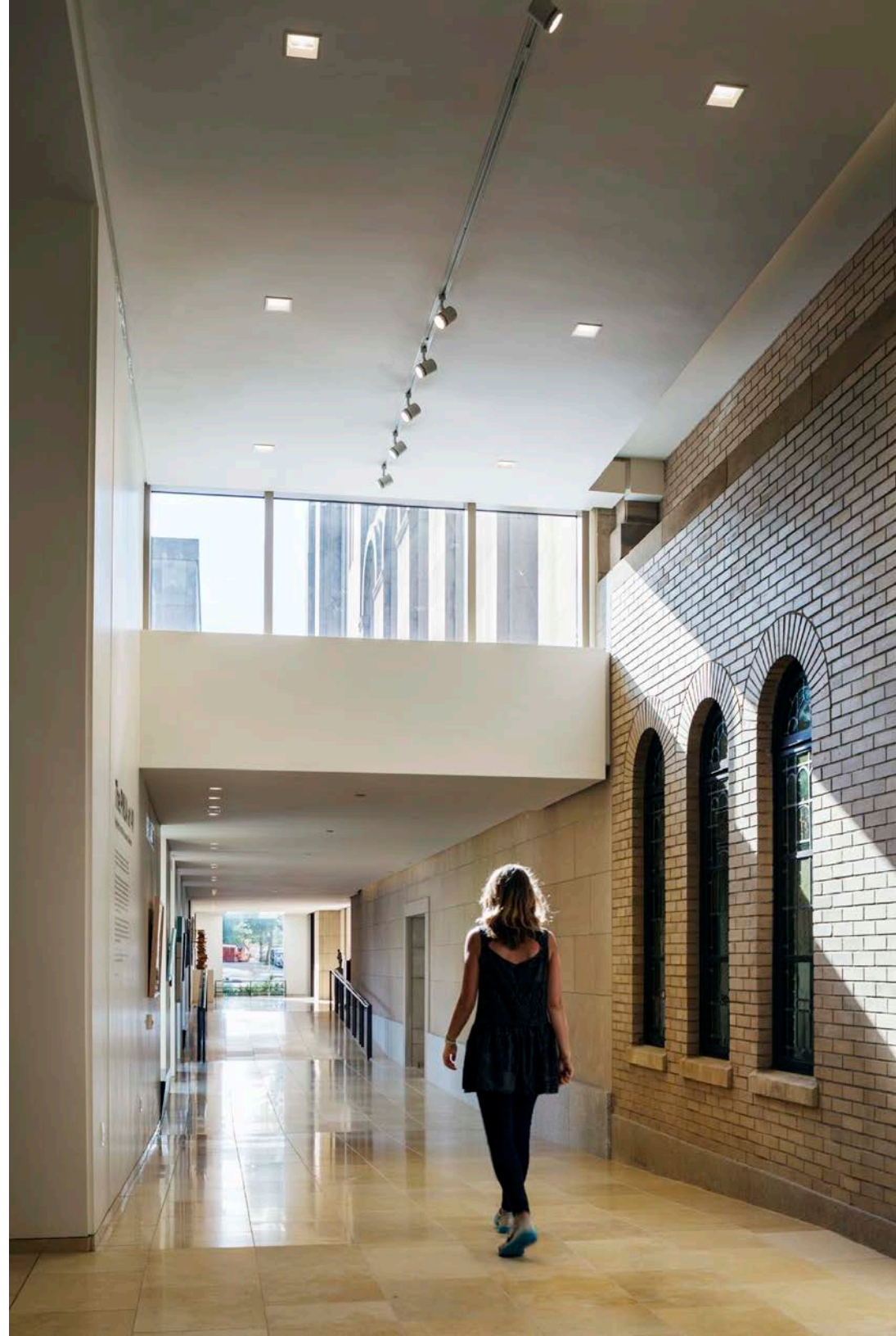


EAST-WEST SECTION THROUGH GALLERY AND STAIR

A new east-west gallery and stair/elevator tower resolve circulation and accessibility issues, carefully positioned to retain view and natural light to the stained glass windows on the south facade.



The addition on the building's south side provides a new accessible entrance with direct connections to all religious, educational, meeting, and social spaces.





The addition offered the opportunity to improve the historic building through connectivity and legibility, while introducing a contemporary architectural character of welcome and luminosity.



Organized by a new lobby, the program for new and renovated spaces includes an expanded contemporary art gallery that links to the historic Thalheimer Lobby and its displays of Jewish artifacts.



The design is respectful of the historic significance of the existing building and flexible enough to accommodate Rodeph Shalom's continued growth and evolution as a regional center for Jewish life.



The new community room is clad in eighteen-foot translucent channel glass, allowing ample natural light to flow into the space.



A cluster of bald cypress trees filter light and views to and from the new community room. A weeping willow tree softens the atmosphere in the enclosed courtyard and completes the landscape ensemble.



The newly landscaped stretch along Green Street redefines the campus. An entry loggia includes columns clad in bronze and mosaic tile, references to the rich detailing on the Broad Street face of the original building.



Massing, scale, and proportions reference the original, while the substantial use of glazing – both translucent and transparent – allows the addition to serve as a beacon, illuminating the corner of Broad and Green Streets and activating the surrounding neighborhood. The Congregation's long and distinguished history and its current day vibrancy are celebrated through this project.